

MONTHLY MEMBERSHIP PROGRESS REPORT

LOCATION INDIA

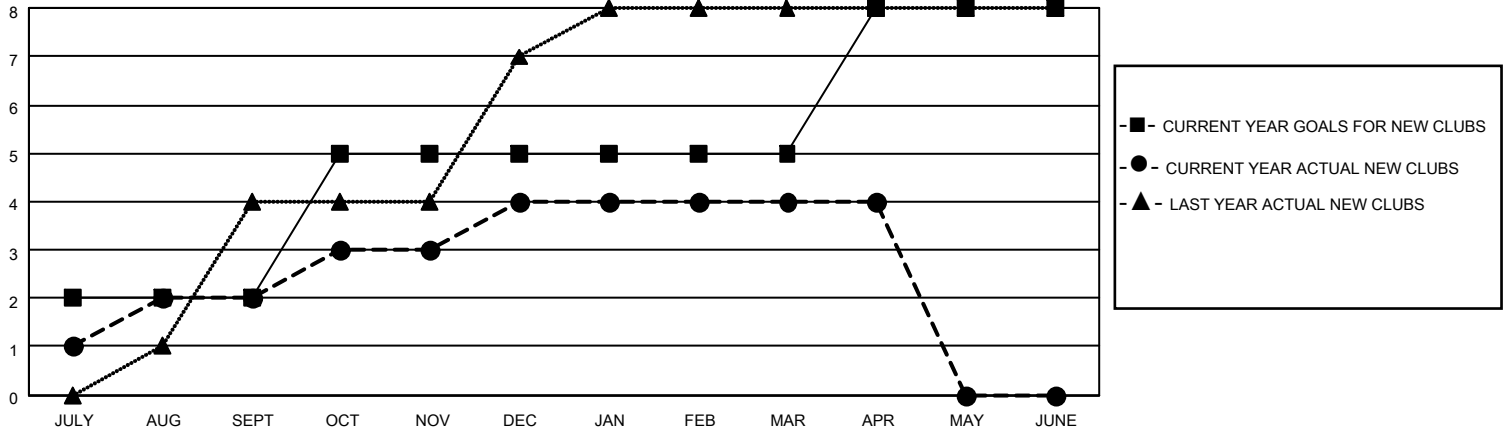
District 321 E

Results as of: 4/30/2022

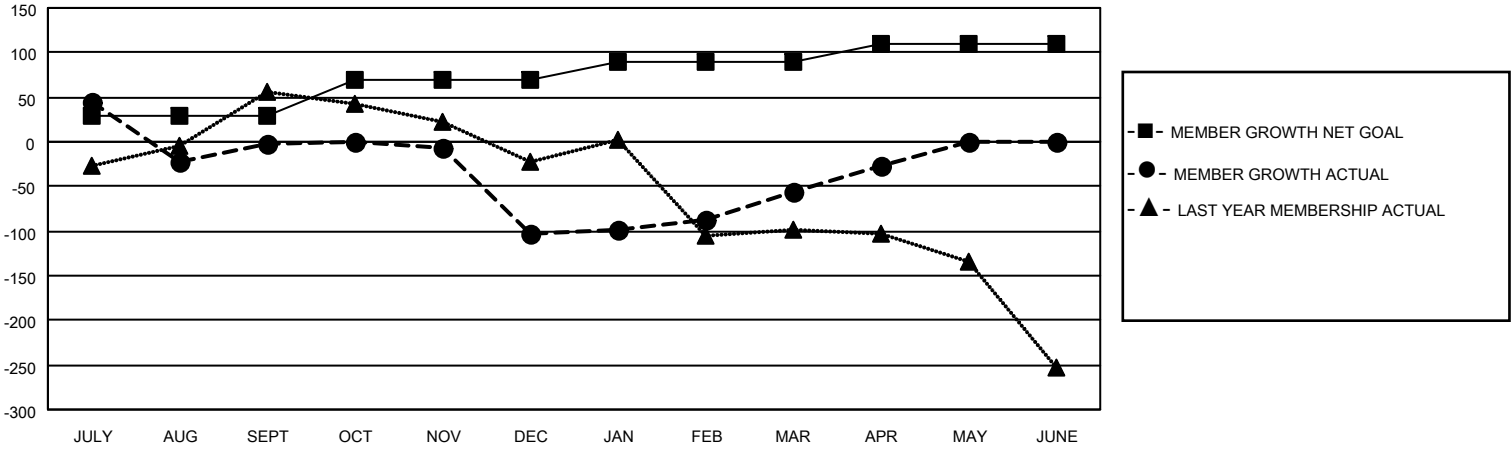
Clubs			
RESULTS FOR 2021-2022			
QUARTER	NEW CLUB GOAL	NEW CLUBS	DROPPED CLUBS
JULY/AUG/SEPT	2	2	5
OCT/NOV/DEC	3	2	5
JAN/FEB/MAR	0	0	0
APR/MAY/JUNE	3	0	0

Members			
RESULTS FOR 2021-2022			
QUARTER	MEMBER GROWTH NET GOAL	MEMBER GROWTH ACTUAL	DROPPED MEMBERS ACTUAL (including transfers)
JULY/AUG/SEPT	30	148	139
OCT/NOV/DEC	40	62	160
JAN/FEB/MAR	20	79	25
APR/MAY/JUNE	20	45	14

GOALS AND ACTUAL NEW CLUBS CUMULATIVE



GOALS AND ACTUAL MEMBERS CUMULATIVE



DROPPED CLUBS: 10

49 CLUBS OF 99 ADDED 1 OR MORE NEW MEMBERS

GENDER DISTRIBUTION

MALE	1,781 (63.04%)
FEMALE	1,044 (36.96%)
NON BINARY	0 (0.00%)
PREFER NOT TO ANSWER	0 (0.00%)

DROPPED MEMBERS

[CLICK HERE FOR CUMULATIVE MEMBERSHIP DATA](#)

DECEASED	10
CLUB CANCELLED	161
OTHER	167
TOTAL	338

TOTAL FAMILY UNIT MEMBERS 2,217

FAMILY MEMBERS PAYING HALF DUES 1,479